

# WOOD & WOOD PRODUCTS

DECEMBER 2000



**Productivity  
Progress  
Report:  
Room for  
Improvement**  
p. 68



**Egypt – The New  
Frontier?** p. 23

**Millwork Firm Revamps  
Its Future** p. 55

**Putting the Internet  
to Work** p. 49

**Automating Solid  
Surface Fabrication** p. 61

[WWW.ISWONLINE.COM](http://WWW.ISWONLINE.COM)

## DEPARTMENTS

<b>STAFF BOX/ARCHIVES</b>	<b>9</b>
<b>EDITOR'S PAGE</b>	<b>11</b>
OSHA Pulls a Fast One with Ergonomics Rule	
<b>TRENDS &amp; NEWS</b>	<b>13</b>
• WMIA Honors Innovator, Educator & Exporter of the Year Winners	
• Willamette Industries Rejects Weyerhaeuser's Takeover Bid	
• Furniture.com Waves White Flag	
• AFMA Forecasts Shipments to Increase 5.6% This Year	
• OSHA Releases Final Ergonomics Program Standard	
<b>CONSULT JERRY METZ</b>	<b>21</b>
A Step into Tomorrow	
<b>MANAGEMENT MATTERS</b>	<b>23</b>
Egypt — The New Frontier? Part 1: The Past and Present	
<b>DESIGN LINES</b>	<b>36</b>
Furniture Show Brings Italian Trends to Chicago	
<b>WOOD OF THE MONTH</b>	<b>41</b>
Avodiré	
<b>ILLUSTRATED PRODUCT GUIDE</b>	<b>44</b>
<b>PRODUCT NEWS</b>	<b>93</b>
<b>NEW LITERATURE</b>	<b>103</b>
<b>READER SERVICE CARD</b>	<b>107</b>
<b>INDEX TO ADVERTISERS</b>	<b>109</b>
<b>COMING EVENTS</b>	<b>110</b>
<b>CLASSIFIED ADS</b>	<b>119</b>



Design Lines, p. 36



Wood of the Month, p. 41

# WOOD & WOOD PRODUCTS

Vol. 105 No. 13

December 2000

## FEATURES

**PUTTING THE INTERNET TO WORK** 4  
Here is what new information technology and E-commerce can do for your woodworking business.

**MILLWORK FIRM REVAMPS ITS FUTURE WITH TECHNOLOGY** 5  
Continental Woodworking Co.'s new management sees machinery as the key to reaching its goals.

**TECHNOLOGY SURFACES AT SOLIDTOP SPECIALISTS** 6  
Automation gives South Florida shop the ability to fabricate Corian countertops to fill six kitchens a day

**PRODUCTIVITY PROGRESS REPORT: Room for Improvement** 6  
Exclusive W&WP survey focuses on readers' plans to boost their manufacturing processes.

**Throughput Improvements Shorten Delivery Times** 7  
Furniture makers embrace new technology to improve productivity.

**CHAIR COMPONENTS COVER FULL RANGE OF FURNITURE STYLES** 7  
W&WP presents a roundup of various chair components from wood to hardware.

**REDUCING REWORK ADDS PLANT CAPACITY — INEXPENSIVELY** 8  
By getting everyone to focus on quality, products can be manufactured right the first time and effectively allow a plant to increase its production.

**DESIGNING A SPRAY BOOTH SYSTEM THAT REALLY WORKS** 8  
Carefully integrating the various parts of a finishing system will result in a safe, efficient environment that is a pleasure to use.

**FOCUS ON FINISHING MATERIALS** 9  
W&WP presents materials for finishing, correcting damage and making repairs.



Continental Woodworking Co., p. 55

**On the Cover:**  
Take a look on p.68 to see what steps furniture makers are taking to improve productivity.  
Cover design by Yoshi Sekiguchi

WOOD & WOOD PRODUCTS (ISSN 0043-7662) is published monthly, except semi-monthly in March, by Vance Publishing Corp., 400 Knightsbridge Pkwy., Lincolnshire, IL 60069. All statements, including product claims, are those of the person or organization making the statement or claim. The publisher does not adopt any such statement or claim as its own and any such statement or claim does not necessarily reflect the opinion of the publisher. Periodicals postage paid at Lincolnshire, IL 60069 and additional mailing offices. Subscription rates: USA, possessions, Canada and Mexico — \$50 per year, single copies \$6 except Red Book issue which is \$50 and Centennial issue which is \$26, including postage. Foreign — \$130 which includes air speeded delivery; Est. 1898. Reg. U.S. Patent Off Copyright 2000, Vance Publishing Corp. Printed in the USA. **POSTMASTER: Send address changes to Wood & Wood Products, P.O. Box 1400, Lincolnshire, IL 60069.** Wood & Wood Products is registered in the United States Patent and Trademark Office. Selected articles of Wood & Wood Products can be found on the World Wide Web's Industrial Strength Woodworking [www.iswonline.com](http://www.iswonline.com) and Wood/Web [www.woodweb.com](http://www.woodweb.com)

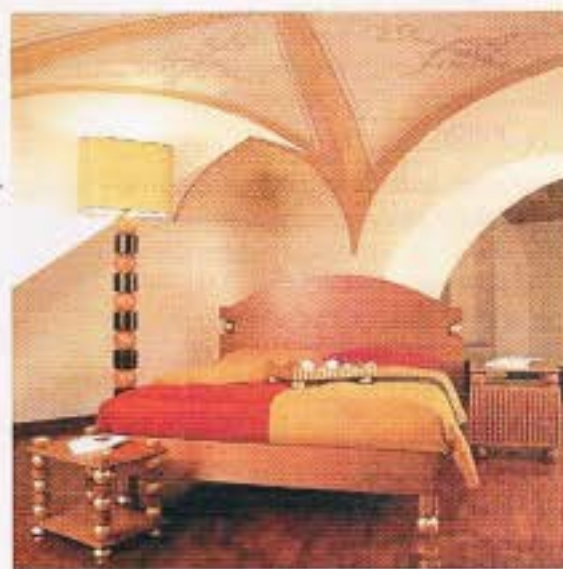


# Furniture Show Brings Italian

The annual Chicago Design Show featured a pavilion of contemporary Italian design.



The Pianeti CD shelf from Massimo Caggiano is featured along with the Zeus dining table, the Puck night stand and the Le Lune chest of drawers. All incorporate gold-leaf geometrical decorative elements.



# Trends to Chicago

FOR THE SECOND YEAR, Italian designers brought a high-quality European-style furniture display to the Chicago Design Show, held Nov. 2-5 at the Merchandise Mart in Chicago.

This year nearly 50 Italian companies featured the latest in Italian design and international trends.

Organized by A.I.G.I., s.r.l. of Biassono, Italy, the show featured many Italian exhibitors who were showing in the United States for the first time. What resulted was the Italian version of contemporary design, where different types of wood were paired with components like glass, crystal and stainless steel. Highlights from the show are pictured here.

The Italian Design Furniture Show will return to the Merchandise Mart on Oct. 4-7, 2001.



Wood and glass form innovative designs as seen in the Maya table (above), designed by Giuseppe Cerasoli, and the Allisei dresser (below), designed by Libero Patignani. Both pieces are from Prealpi SpA's Formidea line.



The Chairs line from Colico, including this Navigilio chair featured in the Italian pavilion, includes pieces that can be used in kitchens, living rooms, bars, restaurants, hotels and outdoors as well as in the office.





FURNITURE SHOW BRINGS ITALIAN TRENDS TO CHICAGO

**Massimo Caggiano**

In Caggiano's collection, items of furni-

ture are grouped under descriptive names. These names allow the company



The Exit 01 model from Bosca Arredi is structured in wood-veneered pine strip board covered with maple wood. Maple wood-strip weaving is enclosed between two tempered transparent glass panels.

to represent its classical influences while still communicating the quality of the materials (cherry, poplar and Tanganyika wood) and the fixtures (gold-leaf applied by hand to the geometrical decorative elements, Murano glass for handles) which represent the company's concept of utility.

**Colico**

Colico has produced modern chairs and tables since 1920. In the 1960s, the company began an industrial division specializing in the production of chairs and tables, with more than 1,000 models to choose from.

**Prealpi SpA**

For more than 30 years, Prealpi SpA has specialized in manufacturing modern bedrooms. All items — beds, chests of drawers, night tables and wardrobes — are created with aesthetic care and technical knowledge. In 1998 Prealpi introduced a new accessories line called Formidea.

**Bosca Arredi**

For 30 years Bosca has offered linear slid-

ing doors, folding doors, swing doors and fixed-partition panels. The linear sliding doors can be fitted onto walls and ceilings or they can have counter frames to slide into the walls. All selections are custom made to measure in a wide choice of woods, including maple, cherry, canaletto walnut, walnut and wengé.

**Lema SpA**

Lema offers Selecta, a multi-functional system of bookcases, drawers, cabinets, cupboards, shelves, glass cases and much more. The main elements consist of self-supporting bookcases and shelves, which are available in three different depths. There is also the "Selecta Boiserie," whose elements can be attached to panels fixed to the wall. Glass or wooden fronts can be secured on these panels. Benches, cupboards, hi-fi or TV consoles can be added.

A Selecta wall-mounting shelf system, for example, has everything the program has to offer: bookcases, shelves, drawers, cabinets with glass doors, sliding doors, along with a matching TV console with sliding smoked-glass doors.



The Selecta wall-mounting shelf system offers versatility.

THE ORIGINAL LEUCO DIAMAX®

**LEUCO DIAMAX® Tooling:**  
New and Improved  
Disposable Diamond  
for more versatility  
and cost-effectiveness

DIAMAX® advantages that are worth their weight in gold:

- Diamond cutting edges for extremely long tool life
- Consistently excellent cutting quality
- Golden plating to ensure corrosion protection

- Constant tool dimensions — eliminates the need for machine adjustments
- Less down-time through fewer tool changes
- No fuss required to schedule and track tool service and resharpening
- Very competitive prices
- Lower capital outlay for inventory
- Less worry about loss if tools become damaged
- Ideal tool for first-time diamond users

■ Available from stock

Performance with every design and every production task — shank-type cutters; cutters for jointing/rabbeting, edge trimming, chamfering, rounding and grooving; saw blades for scoring.

Metric and inch sizes. Shank-type cutters in left and right-hand rotation.

ISO 9001 certified.



For a color catalog call 1-800-433-1630

**LEUCO**  
...One Step Above.

LEUCO Tool Corporation  
Corporate Headquarters  
28090 W. Concrete Drive  
Ingleside, IL 60041

(800) 433-1630 Fax (815) 344-1140 E-mail: info@leucotool.com

West  
Seattle, WA (253) 847-6692

Central  
Ingleside, IL (800) 433-1630  
Temple, TX (254) 742-1233

East  
Kalamazoo, MI (877) 353-7802  
Villa Rica, GA (800) 631-0096  
Burlington, NC (336) 221-9696

Visit us online at [www.leucotool.com](http://www.leucotool.com)

Circle #32 on Reader Service Card